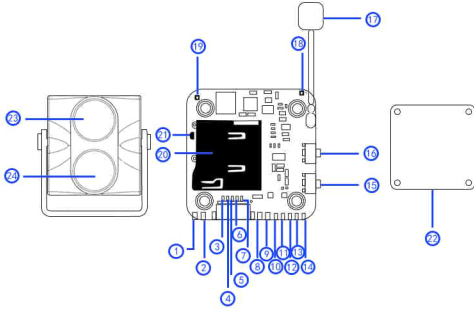


Quick Guide



(1) BATTERY (4.2V)	(2) GND	(3) 5-12V	(4) GND
(5) VIDEO	(6) MENU	(7) AGND	(8) 5-12V
(9) GND	(10) VIDEO	(11) MENU	(12) AGND
(13) RX	(14) TX	(15) WIFI/RECORD	(16) POWER/MODE
(17) ANTENNA	(18) MODE LED	(19) WIFI LED	(20) TF CARD
(21) USB	(22) HEAT SINK	(23) 4K LENS	(24) FPV LENS

FUNCTION DESCRIPTION

The button (as position ⑬) is for WIFI and Recording mode, generally (not in WIFI mode) short press to start/stop recording; long press (about 5-8s) to activate WIFI mode, then short press will turn off WIFI mode.

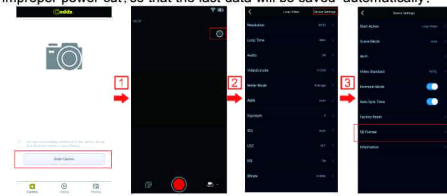
The button (as position ⑭): long press (about 5-8s) to turn on/off the camera, short press to switch the video resolution (red LED: 4K/30fps [image ratio 16:9]; green LED: 2.7K/60fps [image ratio 4:3], 2.7K/30fps [image ratio 16:9]; mixture of red and green LED: 1440P/60fps, 1440P/30fps [image ratio 4:3]; blue LED: 1080P/90fps, 1080P/60fps, 1080P/30fps [image ratio 16:9]) User can also go in the APP to switch the video resolution. We suggest that switch the video resolution in APP better than the button.

NOTE BEFORE USE

1. Pls use high-speed TF card with minimum speed of U3 class because the camera has high bit rate, otherwise TF card may not be detected. (The well-known brands like Samsung, Kingston, SanDisk, Lexar with 32GB above are recommended)
2. The heat sink is used to fix the flat cable and dissipate heat, which cannot be removed
3. Both AGND and GND must be connected to the GND of FC at the same time, or you may experience image interference (Please note direct short circuit is not necessary)
4. The flat cable connected in between camera and DVR cannot be folded, or it may cause no image.
5. Data save when power cut suddenly; please power on after any improper power cut, so that the last data will be saved automatically.

INSTRUCTIONS

- Step 1: Format the TF card
 - a. format the TF card into FAT32 (64k)
 - b. Insert the TF card into the slot on DVR, then format by selecting in setting menu of APP.
- Step 2: Connect the camera to power, there are 4 available ways to supply power (power input must be within DC 5-12V):
 - a. connect by the socket (as position ③, ④, ⑤, ⑩, shown on the picture)
 - b. connect by the bonding pad (as the position ⑧, ⑨, ⑩, ⑪, shown on the picture)
 - c. USB connection (as the position ⑫, shown on the picture)
 - d. 4.2V battery (as the position ①, ②, shown on the picture)
- Step 3: The LED will blink when the camera is switched on (if not blink, please check whether the TF card formatted successfully or be full, whether the flat cable be connected well)
- Step 4: Operate on APP to connect. Pls download APP first, you can search the application name 'CADDXFPV' on both Google Play (Android) and APP Store (iOS) to download.



- Step 5: Long press the WIFI button (as position ⑬) for 5s, green LED will blink (as position ⑭), then find the WIFI SSID "CADDX*****" in the APP and enter password (default is 12345678), it will indicate WIFI connected successfully. Click the connected device displayed on the page and can see the real-time image.
 - Step 6: User can go in setting menu and equipment setting menu of the APP.
 - Step 7: There is optional accessory FC telecom cable that can be bought separately, with which user can use the remote control to set the menu. (For example, user can use the remote control to switch on/off WIFI mode and video recording via the FC cable)
- (P.S. Please use the computer with CPU i5, 1GB discrete graphics card or above to play or edit any 4K video, because 4K video usually strictly requires computer with excellent configuration and performance. Apple Macbook Air is not recommended, which cannot play 4K video fluently.)

