

GEP-F722-45A AIO v2

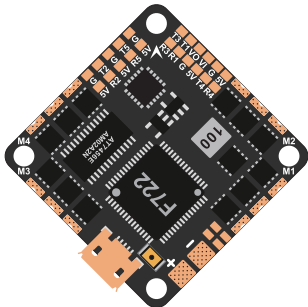
FC:F722

ESC:BLS_45A

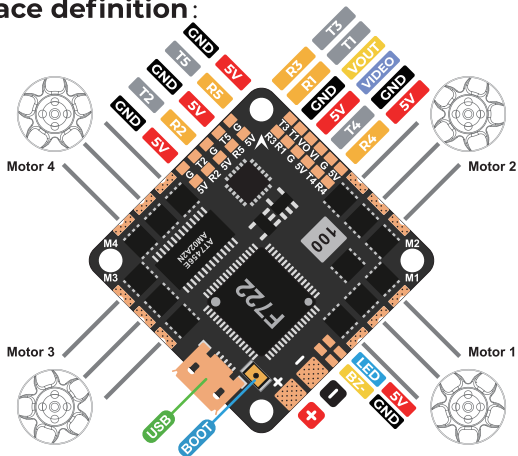
GEPRC

Specification:

Model Name:	GEP-F722-45A AIO v2
MCU:	STM32F722
Gyro:	ICM-42688-P
Firmware target:	GEPRC_F722_AIO
OSD:	AT7456E
Current:	YES
Beeper:	YES
LED:	YES
Black Box:	16MB
USB:	micro USB
BEC output:	5V@2.5A
ESC MCU:	8BB21F16G
Continuous current:	45A
MAX current:	55A (10s)
Input Voltage:	2-6S LiPo
Supports:	Dshot600,Oneshot,Multishot
ESC Traget:	G_H_30
Size:	32x32mm
Installing Hole:	25.5x25.5mm(M3)
Weight:	8.3g



Interface definition:



DJI Diagram FPV System:

Identifier	Configuration/MSP	Serial RX
USB VCP	<input checked="" type="checkbox"/> 115200 ▾	<input type="checkbox"/>
UART1	<input checked="" type="checkbox"/> 115200 ▾	<input type="checkbox"/>
UART2	<input type="checkbox"/> 115200 ▾	<input checked="" type="checkbox"/>

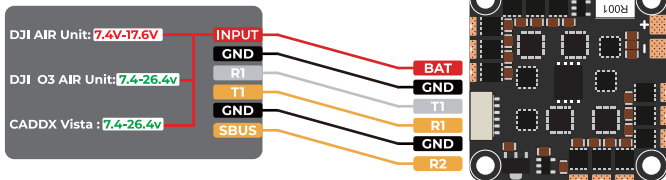
Receiver

Serial-based receiver(SPEKSAT,S ▾) Receiver Mode

Note:Remember to configure a Serial Port (via Ports tab) and choose a Ser Receiver Provider when using RX_SERIAL feature.

SBUS ▾ Serial Receiver Provider

When using the "BAT" interface to power VTX, make sure your battery voltage is within the voltage range required by VTX to avoiding damage the VTX board, or use BEC to supply power to the VTX

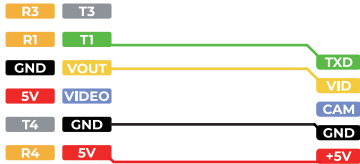
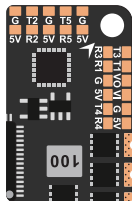


Analog VTX:

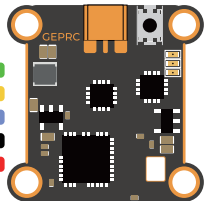
Identifier	Configuration/MSP	Peripherals	
USB VCP	<input checked="" type="checkbox"/> 115200 ▾	Disabled ▾	AUTO ▾
UART1	<input type="checkbox"/> 115200 ▾	VTX,IRC Tamp ▾	AUTO ▾
UART2	<input type="checkbox"/> 115200 ▾	Disabled ▾	AUTO ▾

Other Features

- AIRMODE
- OSD
- DYNAMIC_FILTER



STABLE VTX58600N



Camera:

Other Features

<input type="checkbox"/>	AIRMODE	Permanently enable Airmode
<input checked="" type="checkbox"/>	OSD	On Screen Display
<input type="checkbox"/>	DYNAMIC_FILTER	Dynamic gyro notch filtering



Receiver:

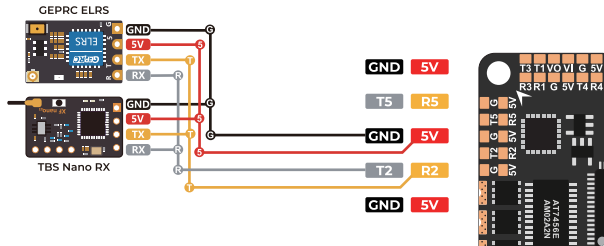
Identifier	Configuration/MSP	Serial RX
USB VCP	<input checked="" type="checkbox"/> 115200 ▾	<input type="checkbox"/>
UART1	<input type="checkbox"/> 115200 ▾	<input type="checkbox"/>
UART2	<input type="checkbox"/> 115200 ▾	<input checked="" type="checkbox"/>

Receiver

Serial-based receiver(SPEKSAT,S ▾) Receiver Mode

Note:Remember to configure a Serial Port (via Ports tab) and choose a Ser Receiver Provider when using RX_SERIAL feature.

CRSF ▾ Serial Receiver Provider



Receiver:

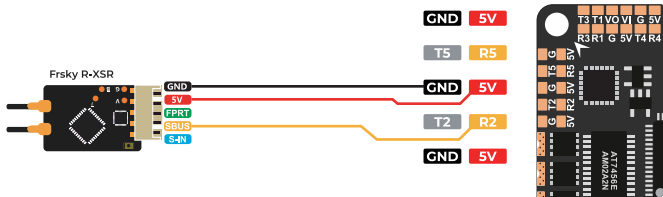
Identifier	Configuration/MSP	Serial RX
USB VCP	<input checked="" type="checkbox"/> 115200 ▾	<input type="checkbox"/>
UART1	<input type="checkbox"/> 115200 ▾	<input type="checkbox"/>
UART2	<input type="checkbox"/> 115200 ▾	<input checked="" type="checkbox"/>

Receiver

Serial-based receiver(SPEKSAT,S ▾) Receiver Mode

Note:Remember to configure a Serial Port (via Ports tab) and choose a Ser Receiver Provider when using RX_SERIAL feature.

SBUS ▾ Serial Receiver Provider



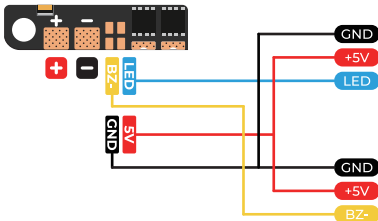
Buzzer & Led Board:

Other Features

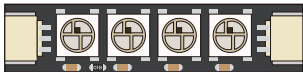
- TELEMETRY
- LED_STRIP
- DISPLAY

Beeper Configuration

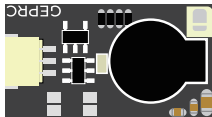
- GYRO_CACIBRATED
- RX_LOST
- RX_LOST_LOADING
-



GEPRC LED Board



GEPRC Super Buzzer



GPS:

Setup	Identifier		Sensor Input	
Ports	USB VCP		Disabled	AUTO
Configuration	UART1		Disabled	AUTO
Power&Battery	UART2		Disabled	AUTO
Failsafe	UART3 →	GPS	AUTO

Setup

Ports

Configuration

Power&Battery

Failsafe

GPS GPS for navigation and telemetry

protocol

Auto Baud

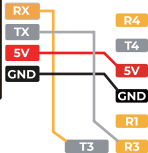
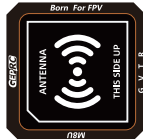
Auto Config

Set Home Point Once

Accelerometer

Barometer(if supported)

GEPRC-M8U GPS



Include:

- 1 x GEP-F722-45A AIO v2
 - 1 x XT30-7CM-18AWG Power Cables
 - 1 x 35V220UF Capacitor
 - 1 x SH1.0-6Pin to GH1.25-8Pin Cables
 - 1 x SH1.0-6Pin Cables
 - 8 x M2*6.5mm Damping Rings
-

Contact:

Website: <http://geprc.com>

facebook

[facebook.com/geprc](https://www.facebook.com/geprc)



Official
website

www.geprc.com



Instagram

[instagram.com/geprc](https://www.instagram.com/geprc)



You  Tube

[youtube.com/geprc](https://www.youtube.com/geprc)



Manual

geprc.com/support

