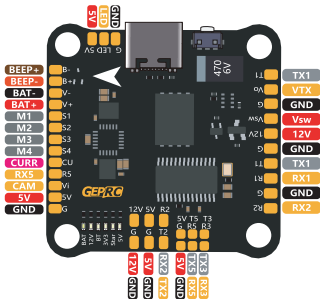




SPAN F722 BT-HD v2

Target:	GEP RC F722-BT-HD v2
MCU:	STM32F722RET6
GYRO:	ICM 42688-P
Blackbox:	512Mb On-board SD card
OSD:	AT7456E
Barometer:	NO
BEC 5V :	3A
BEC 12V:	3A
Size:	36x36mm, \varnothing 4mm
Mounting hole:	30.5X30.5mm
Input Voltage:	12.6-26.2V
Uart:	5set

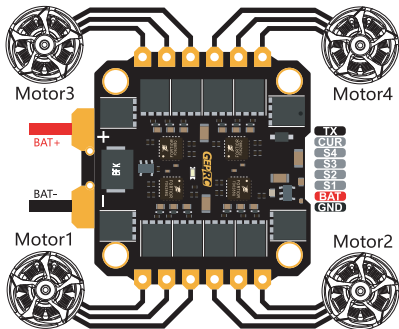
Supporting adjust parameters by Bluetooth on Speedybee App



GEPRC

SPAN 50A ESC v2

MCU:	STM32G071(32BIT)
Continuous Current:	50A
Burst Current:	60A (5s)
Bec:	NO
Current detection:	YES
Telemetry:	YES
Supports Dshot:	150-600
PWM:	24-96K
Target:	GEPRC-G071
Input Voltage:	12.6V-26.2V



Bluetooth

1. Connect the FC to the battery
2. Open the Speedybee app
3. Click the Bluetooth icon on the screen
4. Once you have found "GEPRC F7" click Connect
5. **For your safety, please remove the propeller before Plug in the battery to adjust the FC parameters**

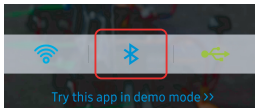
Speedy Bee App download link

<https://www.speedybee.com/speedy-bee-app/>

Or scan the QR code below to download



①



②

Found **GEPRC F7**



Search other devices

Connect

DJI FPV digital system

Identifier	Configuration/MSP	Serial RX
USB VCP	<input checked="" type="checkbox"/> 115200 ▾	<input type="checkbox"/>
UART1	<input checked="" type="checkbox"/> 115200 ▾	<input type="checkbox"/>
UART2	<input type="checkbox"/> 115200 ▾	<input checked="" type="checkbox"/>

Receiver

Serial(via UART) ▾ Receiver Mode

The UART for the receiver must be set to 'Serial Rx'(in the Ports tab)
Select the correct data format from the drop-down,below:

SBUS ▾ Serial Receiver Provider

DJI AIR Unit: **7.4V-17.6V**

INPUT

12V

GND

GND

R1

TX1

T1

RX1

GND

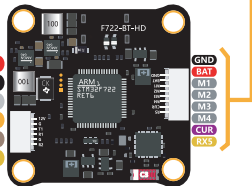
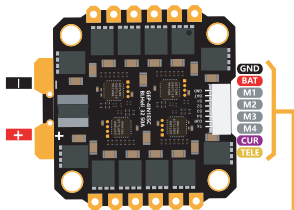
GND

SBUS

RX2

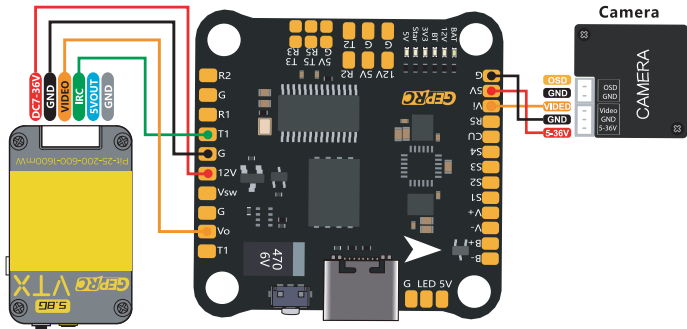
DJI O3 AIR Unit: **7.4-26.4v**

CADDX Vista : **7.4-26.4v**

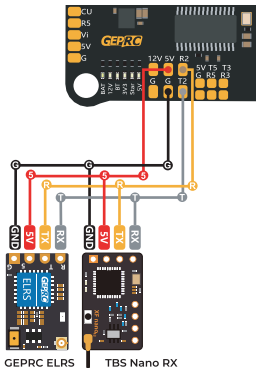


Analog VTX

Identifier	Configuration/MSP	Peripherals		Other Features	
USB VCP	<input checked="" type="checkbox"/> 115200 ▾	Disabled ▾	AUTO ▾	<input type="checkbox"/> AIRMODE	
UART1	<input type="checkbox"/> 115200 ▾	VTX,IRC Tramp ▾	AUTO ▾	<input checked="" type="checkbox"/> OSD	
UART2	<input type="checkbox"/> 115200 ▾	Disabled ▾	AUTO ▾	<input type="checkbox"/> DYNAMIC_FILTER	



Receiver: TBS/ELRS



Identifier	Configuration/MSP	Serial RX
USB VCP	<input checked="" type="checkbox"/> 115200 ▼	<input type="checkbox"/>
UART1	<input checked="" type="checkbox"/> 115200 ▼	<input type="checkbox"/>
UART2	<input type="checkbox"/> 115200 ▼	<input checked="" type="checkbox"/>

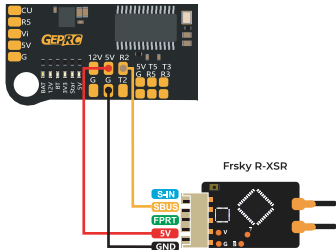
Receiver

Serial(via UART) ▼ Receiver Mode

The UART for the receiver must be set to 'Serial Rx' (in the Ports tab)
Select the correct data format from the drop-down, below:

CRSF ▼ Serial Receiver Provider

Receiver: R-XSR



Identifier	Configuration/MSP	Serial RX
USB VCP	<input checked="" type="checkbox"/> 115200 ▼	<input type="checkbox"/>
UART1	<input checked="" type="checkbox"/> 115200 ▼	<input type="checkbox"/>
UART2	<input type="checkbox"/> 115200 ▼	<input checked="" type="checkbox"/>

Receiver

Serial(via UART) ▼ Receiver Mode

The UART for the receiver must be set to 'Serial Rx'(in the Ports tab)
Select the correct data format from the drop-down,below:

SBUS ▼ Serial Receiver Provider

GPS

Setup	Identifier		Sensor Input	
Ports	USB VCP		Disabled	AUTO
Configuration	UART1		Disabled	AUTO
Power&Battery	UART2		Disabled	AUTO
Failsafe	UART5 →	GPS	AUTO

Setup

Ports

Configuration

Power&Battery

Failsafe

GPS GPS for navigation and telemetry

UBLOX protocol

Auto Baud

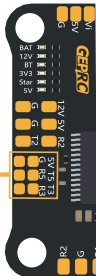
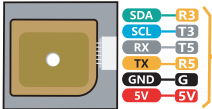
Auto Config

Set Home Point Once

Accelerometer

Barometer(if supported)

Magnetometer(if supported)



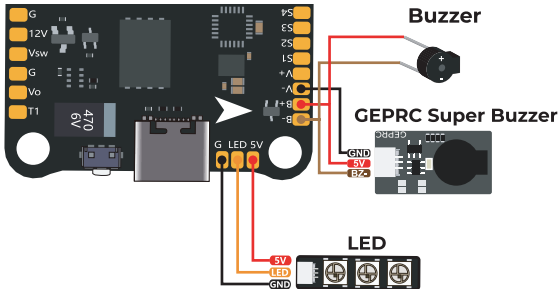
Buzzer& LED Board

Beeper Configuration

- GYRO_CALIBRATED
- RX_LOST
- RX_LOST_LOADING
-

Other Features

- TELEMETRY
- LED_STRIP
- DISPLAY



Include

1 x SPAN F722-HD-BT FC

1 x SPAN G50A BLHeli_32 50A ESC

1 x XT60-11CM-14AWG Cable

4 x M3x30mm screw

4 x M3 x25mm screw

8 x M3 Nylon nut

1 x 35V 680UF Capacitor

1 x SH1.0 8Pin Cable

1 x SH1.0 to GH 1.25 6Pin Cable

10 x M3*8 damping rings

Contact:

Website: <http://geprc.com>

facebook



[facebook.com/geprc](https://www.facebook.com/geprc)

Official
website



www.geprc.com

Instagram



[instagram.com/geprc](https://www.instagram.com/geprc)

You Tube



[youtube.com/geprc](https://www.youtube.com/geprc)

Manual



geprc.com/support