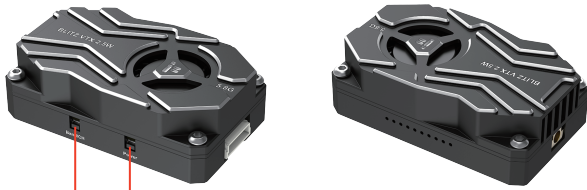


BLITZ Whoop 5.8G 2.5W VTX Instructions



Frequency and channel button

Power button

Button Operation

1. Frequency and channel button;

Frequency (red light): Long press for 2 seconds, LED blinks to indicate the frequency A to R. Long press for 2 seconds to switch the frequency band.

Channel (blue light): Short press the button once, LED light indicates channel CH1 to CH8 (sort from left to right), short press to switch the channel.

2. Power button;

Power (green light): Long press for 2 seconds to enter or exit PIT mode, green LED light indicates entering PIT mode.

Power (green light): Short press the button once, the LED light blinks to indicate the output rate of the video transmission, short press to change the output power.

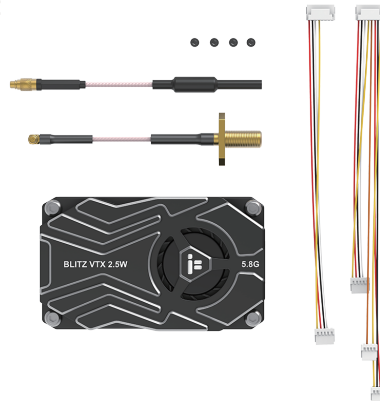
Blinking 1 time = 25mW, blinking 2 times = 400mW, blinking 3 times = 1000mW, blinking 4 times = 2500mW.

Frequency Table

Note: Antennas must be installed BEFORE powering on.
The VTX can be damaged when using without proper cooling.

BAND	Channel							
	CH1	CH2	CH3	CH4	CH5	CH6	CH7	CH8
A	5865MHz	5845MHz	5825MHz	5805MHz	5785MHz	5765MHz	5745MHz	5725MHz
B	5733MHz	5752MHz	5771MHz	5790MHz	5809MHz	5828MHz	5847MHz	5866MHz
E	5705MHz	5685MHz	5665MHz	5645MHz	5885MHz	5905MHz	5925MHz	5945MHz
F	5740MHz	5760MHz	5780MHz	5800MHz	5820MHz	5840MHz	5860MHz	5880MHz
R	5658MHz	5695MHz	5732MHz	5769MHz	5806MHz	5843MHz	5880MHz	5917MHz

Packing List



1. Specs:

Power levels: PIT/25mW/400mW/1000mW/2500mW

Mounting pattern: 25.5*25.5mm/ø1.6mm

Dimensions: 50*30*16mm

Interface: MMCX

nput Interface: SH1.0 8P

VTX telemetry: IRC Tramp

Channels: 40CH(A-B-E-F-R)

Weight: 32g

2. Ports:

Vbat: 2-8S, 7-34V Positive Input

GND: Negative

IRC: IRC Tramp Signal Input

Video in: Video Signal Input

Camera out: Camera signal output

5V out: 5V Voltage Output

GND: Negative

Camera in: Camera signal input

3. Attention:

(1) Please read the instructions for proper wiring before use.

(2) It is recommended that before switching on the power, make sure that the antenna has been installed, it can extend the life of the module.

(3) It is recommended to ensure the correct voltage range and the correct positive and negative polarity before switching on the power to avoid burning the components.

(4) Please keep enough space when you install the VTX to ensure air convection around the module for heat dissipation. Otherwise, the module will enable overheat protection and the power transmission will be reduced or even switched off.

Connect VTX to FC



Enable the corresponding VTX IRC Tramp on UART port

Identifier	Configuration/MSP	Serial ID	Telemetry Output	Sensor Input	Parameters
USB VCP	115200		Disabled	AUTO	Disabled
UART1	115200		Disabled	AUTO	Disabled
UART2	115200		Disabled	AUTO	Disabled
UART3	115200		Disabled	AUTO	Disabled
UART4	115200		Disabled	AUTO	Disabled
UART5	115200		Disabled	AUTO	Disabled
UART6	115200		Disabled	AUTO	Disabled
UART7	115200		Disabled	AUTO	Disabled
UART8	115200		Disabled	AUTO	Disabled
UART9	115200		Disabled	AUTO	Disabled
UART10	115200		Disabled	AUTO	Disabled
UART11	115200		Disabled	AUTO	Disabled
UART12	115200		Disabled	AUTO	Disabled
UART13	115200		Disabled	AUTO	Disabled
UART14	115200		Disabled	AUTO	Disabled
UART15	115200		Disabled	AUTO	Disabled
UART16	115200		Disabled	AUTO	Disabled
UART17	115200		Disabled	AUTO	Disabled
UART18	115200		Disabled	AUTO	Disabled
UART19	115200		Disabled	AUTO	Disabled
UART20	115200		Disabled	AUTO	Disabled
UART21	115200		Disabled	AUTO	Disabled
UART22	115200		Disabled	AUTO	Disabled
UART23	115200		Disabled	AUTO	Disabled
UART24	115200		Disabled	AUTO	Disabled
UART25	115200		Disabled	AUTO	Disabled
UART26	115200		Disabled	AUTO	Disabled
UART27	115200		Disabled	AUTO	Disabled
UART28	115200		Disabled	AUTO	Disabled
UART29	115200		Disabled	AUTO	Disabled
UART30	115200		Disabled	AUTO	Disabled
UART31	115200		Disabled	AUTO	Disabled
UART32	115200		Disabled	AUTO	Disabled
UART33	115200		Disabled	AUTO	Disabled
UART34	115200		Disabled	AUTO	Disabled
UART35	115200		Disabled	AUTO	Disabled
UART36	115200		Disabled	AUTO	Disabled
UART37	115200		Disabled	AUTO	Disabled
UART38	115200		Disabled	AUTO	Disabled
UART39	115200		Disabled	AUTO	Disabled
UART40	115200		Disabled	AUTO	Disabled

Camera to VTX without FC

